

小野柳遊客中心 Xiaoyeliu Visitor Center

小野柳遊客中心內部設置地質展示館，介紹小野柳特殊的地質景觀及海岸山脈形成與演進的過程。

開放時間:8:30~17:00 電話:089-281136 傳真:089-281519

Situated at the main entrance to the Xiaoyeliu Scenic Area, the Xiaoyeliu Visitor's Center features a geology exhibition hall with many carefully-designed models and rock samples introducing the geological features of Xiaoyeliu and the Coastal Range.

OPENING: 8:30~17:00 TEL:089-281136 FAX:089-281519

小野柳露營區 Xiaoyeliu Camping Area

本露營區設有管理中心及58座汽車營位(有頂營位34座、平台營位24座)，均附設烤肉台架、野餐桌椅及水電等設施，區內並設有廁所及淋浴間，屬一設施完善環境優美的優質營區。營位訂位電話: 089-281500

Xiaoyeliu campground features an administration center and 58RV campsites(34 covered campsites , 24platform campsites). It offers barbecue stands, picnic tables and chairs, as well as facilities including water and electricity supply. The campground also has toilets and shower cubicles. Reservation Contact: Xiaoyeliu Campground 089-281500

太平洋 Pacific Ocean



小野柳 Xiaoyeliu



交通部觀光局東部海岸國家風景區管理處
East Coast National Scenic Area Administration
台東縣成功鎮信義里新村路25號
TEL: (089) 841520
FAX: (089) 841567, 841486
25 Shintsuen Road, Chenggong Township, Taitung County Taitung, 96144, R.O.C.
<http://www.eastcoast-nsa.gov.tw>



小野柳 Xiaoyeliu

海洋與地殼變動交織的地景

Blended Landscapes Created by the Sea and Diastrophism

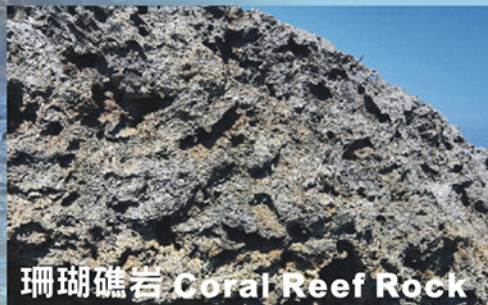
小野柳地層以「富岡砂岩」為主屬極具特色的海蝕砂岩層，有著層序上下顛倒的獨特岩體及屬性。岩面隨處可見的珊瑚礁岩是地殼抬升的見證，另外「豆腐岩」、「蜂窩岩」是千古侵蝕沖刷的紀錄；小野柳的岩層因風化侵蝕作用，造就了各異其趣的奇岩怪石。除了最著名的「大眼蛙」和「駱駝石」、「龜陣岩」之外，還有電話筒、海豚或鳥獸等造型，增添聯想之趣。

The strata of Xiaoyeliu are mainly composed of "Fugang sandstone" possesses unique overturn of strata as well as a fantastic assortment of oddly-shaped rocks formed by intense marine erosion. "Doufu Rock", "Honeycomb Rock" is the recording of marine erosion. It is full of unique landscapes under the effect of weathering erosion such as "big-eyed frog" and "camel stone", "turtle array rock", and the telephone handset, dolphin, birds and animals which has variety of exceedingly strange shapes for association.

旅客須知 Customer Notice

花東仍保留自然純樸的民俗風情與部落原貌，旅遊期間請尊重當地人生活習慣及文化傳統。

East Coast of Taiwan still retains the natural customs and tribal original, please take respect, appreciate mood for nature and local life during travel time.



珊瑚礁岩 Coral Reef Rock

珊瑚礁是由各種珊瑚骨骼，以及其他生物的硬殼部分所構成的礁石，高位珊瑚礁是地殼上升隆起的例證。

The coral reefs at Xiaoyeliu are partly exposed at low tide. They were thrust up from the ocean floor by tectonic movement, over the course of millions of years.



蜂窩岩 Honeycomb Rock

岩層受雨水溶解、鹽分侵蝕、溫度冷熱交替，以及海浪的沖蝕，形成蜂窩狀的岩石表面。

Many of the rocks at Xiaoyeliu have a honeycombed surface resulting from the digging of organisms. Piercing, marine erosion, and weathering which creating innumerable pits are produced on the exposed rock.



豆腐岩 Doufu Rock

岩石受大地應力作用而破裂，形成多組節理面。岩層被兩組接近垂直的節理面裁切，又受到水的侵蝕，形成類似豆腐外觀的岩塊。

Doufu Rock is a peculiar landform made of sandstone crisscrossed by two sets of nearly perpendicular joints that form zones of weakness vulnerable to erosion.



沉積岩 Sedimentary Rock

岩石經風化、侵蝕、搬運、沉積與成岩作用生成，岩石中常可以見到這些作用的痕跡，稱為「沉積構造」。

The various sedimentary developed in the sedimentary rock on the Xiaoyeliu coast, were formed either contemporaneously with deposition or by sedimentary with deposition or by sedimentary processes subsequent to deposition.



單面山 Cuesta

沉積岩成形過程中，沉積物水平向上堆積成類似千層糕的層理。當地殼變動，岩層傾斜，形成單面山地形。

Visitors to Xiaoyeliu will discover intriguing cuestas-landforms that slope gently on one side and descend steeply on the other. They are formed from layers of alternating sandstone and shale.



蕈狀岩 Mushroom Rock

當海岸上升或海平面下降，原在海中的沉積岩和覆蓋其上的珊瑚礁露出水面之後，受差異侵蝕而成。

There are some table like rock masses formed by erosion on the Xiaoyeliu coast. They consist of an upper layer of resistant rock underlain by a softer, partially eroded layer, forming a thin "stem" supporting a wide mass of rock, thus giving these rocks their mushroom like shape.